

# GU10 Range



**Single Round Low Glare:**

- Ø90\*(H)29.
- Cut out: Ø75-80.
- Material: High grade, flame retarded PC.
- Possesses a limited tilt facility.
- Available colours: White and Black.



**Single Square Low Glare:**

- (L)93\*(W)93\*(H)29.
- Cut out: Ø75-80.
- Material: High grade, flame retarded PC.
- Possesses a limited tilt facility.
- Available colours: White and Black.



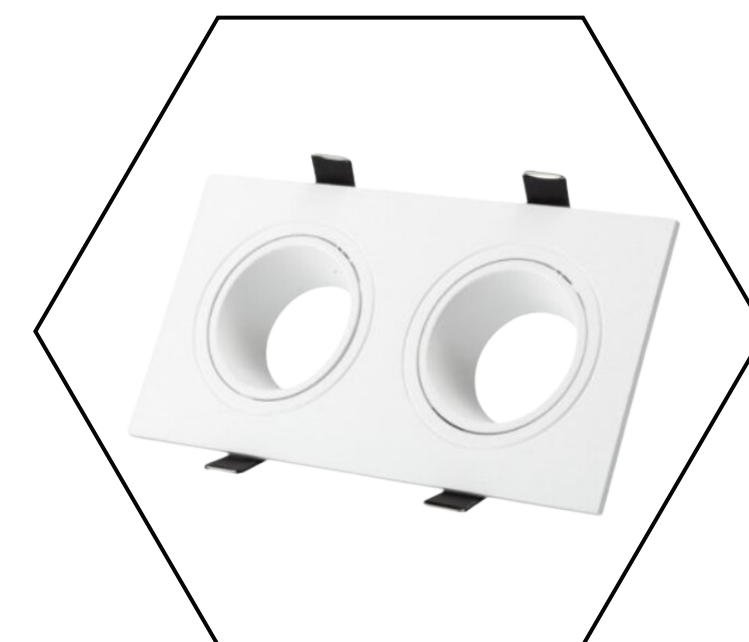
**Single Low Glare Pin Spot:**

- (Ø)88\*(H)32.
- Cut out: Ø75-80.
- Material: High grade, flame retarded PC.
- Possesses a limited tilt facility.
- Available colours: White and Black.



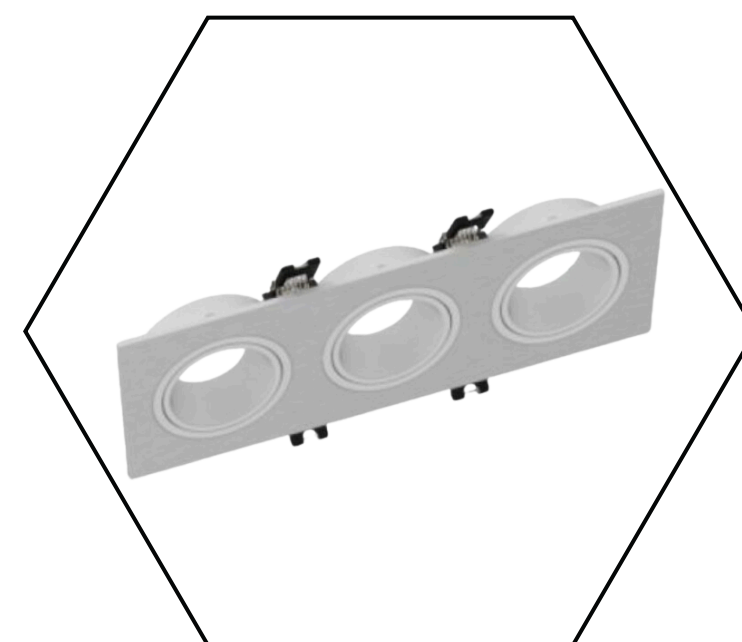
**Single Low Glare Asymmetrical:**

- (Ø)88\*(H)32.
- Cut out: Ø75-80.
- Material: High grade, flame retarded PC.
- Possesses a limited tilt facility.
- Available colours: White and Black.



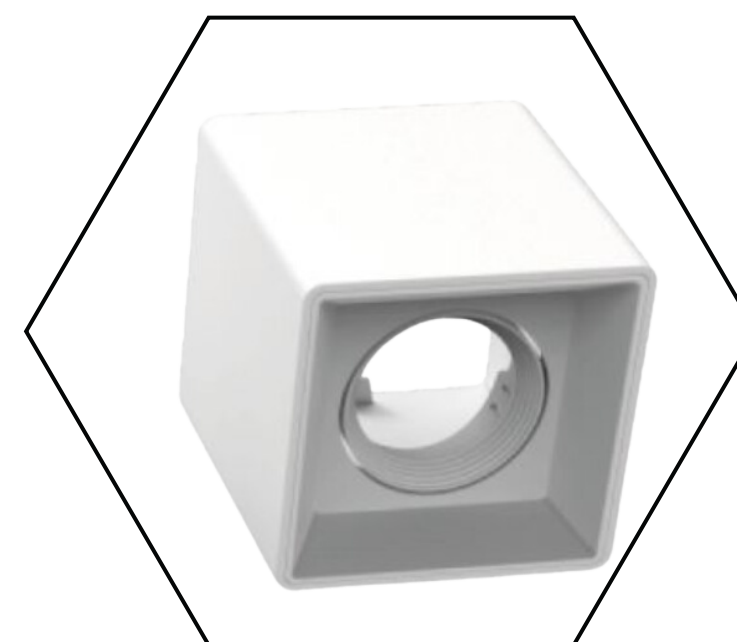
**Double Lamp Low Glare:**

- (L)173\*(W)93\*(H)29.
- Cut out: Ø75-80\*150-165.
- Material: High grade, flame retarded PC.
- Possesses a limited tilt facility.
- Available colours: White and Black.



**Triple Lamp Low Glare:**

- (L)252\*(W)93\*(H)29.
- Cut out: Ø75-80\*240.
- Material: High grade, flame retarded PC.
- Possesses a limited tilt facility.
- Available colours: White and Black.



**Square Surface Mount:**

- (L)96\*(W)96\*(H)100.
- Surface Mount.
- Material: High grade, flame retarded PC.
- Possesses a limited tilt facility.
- Available colours: White and Black.



**Round Surface Mount:**

- (Ø)96\*(H)100.
- Surface Mount.
- Material: High grade, flame retarded PC.
- Possesses a limited tilt facility.
- Available colours: White and Black.