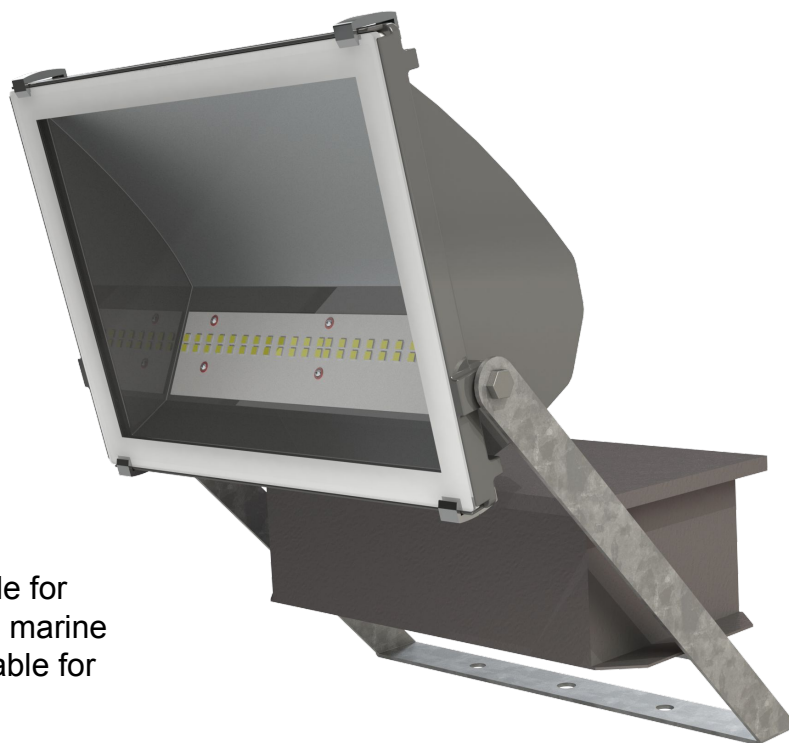
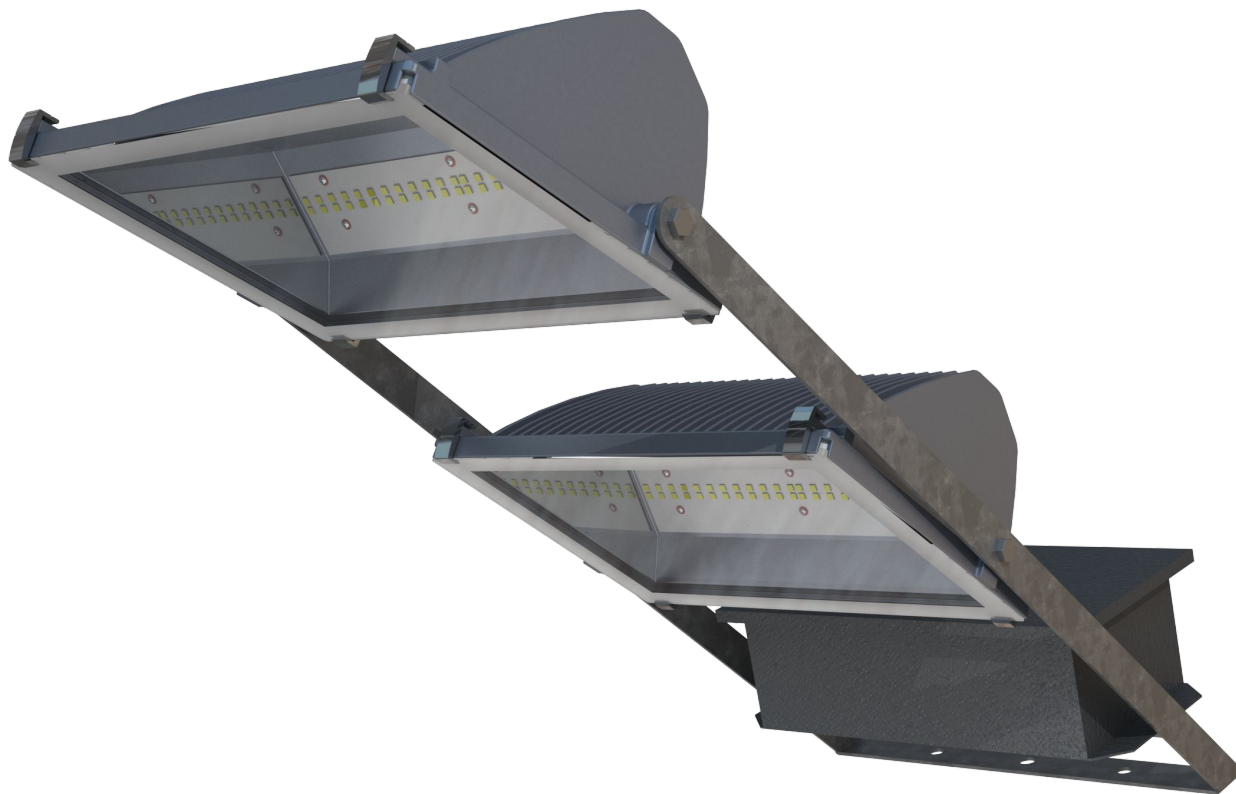
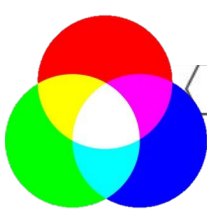


LED Mini Cannon



This product is suitable for operation in outdoor and marine environments. (not suitable for submersion)

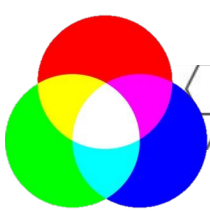




FACT FILE:



	<u>Single Colour 200W</u>	<u>Single Colour 400W</u>	<u>Single Colour 840W</u>
<u>General Information</u>			
Body Construction	Die cast LM6 aluminium - powder coated	Die cast LM6 aluminium - powder coated	Die cast LM6 aluminium - powder coated
Front glass cover	5mm tempered safety glass.	5mm tempered safety glass.	5mm tempered safety glass.
Recommended Height Installation	From 5m to 20m	From 10m to 30m	From 20m to 30m
Compliance	SANS 60598	SANS 60598	SANS 60598
IP Rating	IP 65	IP 65	IP 65
Control Type	Internal power supply	Internal power supply	Internal power supply
<u>Electrical Information</u>			
Electrical Class	Class 1	Class 1	Class 1
Socket Options	N/A	N/A	N/A
Supply Voltage	230V AC/50hz - standard 120 -277V AC - on request	230V AC/50hz - standard 120 -277V AC - on request	230V AC/50hz - standard 120 -277V AC - on request
Surge Protection	Standard – 10kV Optional – 20kV	Standard – 10kV Optional – 20kV	Standard – 10kV Optional – 20kV
Additional protection	10KV – standard 20KV – optional Additional high/low voltage resettable switch optional	10KV – standard 20KV – optional Additional high/low voltage resettable switch optional	10KV – standard 20KV – optional Additional high/low voltage resettable switch optional
Power Factor	Better than 0.95	Better than 0.95	Better than 0.95
<u>Optical Information</u>			
CRI	+80 + 90 available on request.	+80 + 90 available on request.	+80 + 90 available on request.
CCT	3000K or 4000K or 5000K standard Range from 2400K – 6500 on request – anything in between.	3000K or 4000K or 5000K standard Range from 2400K – 6500 on request – anything in between.	3000K or 4000K or 5000K standard Range from 2400K – 6500 on request – anything in between
<u>Performance</u>			
Total Circuit Load and Lumens	172 lumens per W at source – refer to IES files for exact lumens exiting product.	172 lumens per W at source – refer to IES files for exact lumens exiting product.	172 lumens per W at source – refer to IES files for exact lumens exiting product.
<u>Operating Conditions</u>			
Operating Temperature range	-20°C to +45°C	-20°C to +45°C	-20°C to +45°C
<u>Dimensions and Mounting</u>			
Weight	9,5kg	17kg	34kg



FACT FILE:



From 200mm – 350 mm depending on flood aiming angle

