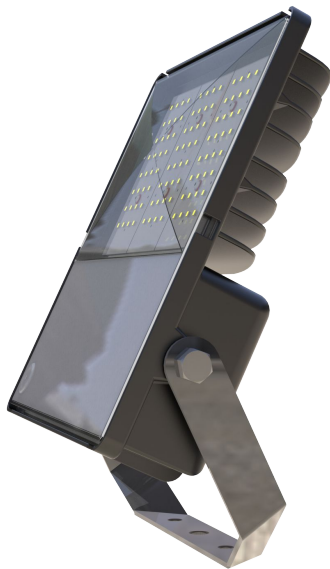
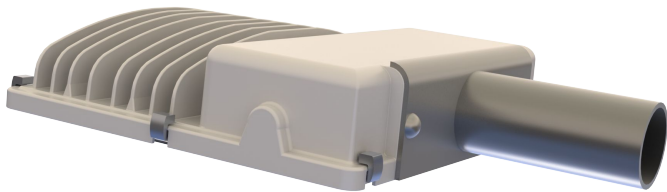


LED Poly Flood / Bulkhead /
Streetlight Ultra 20W – 43W

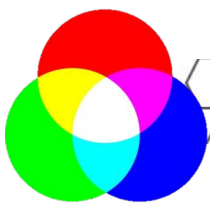
Streetlight



Floodlight

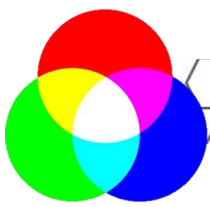
Area Light



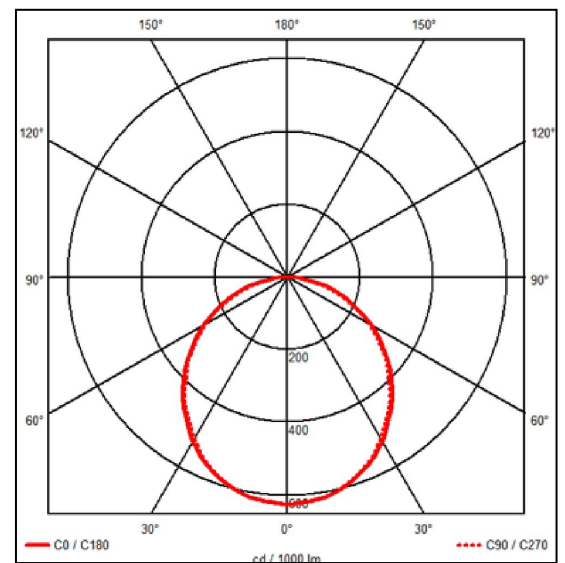
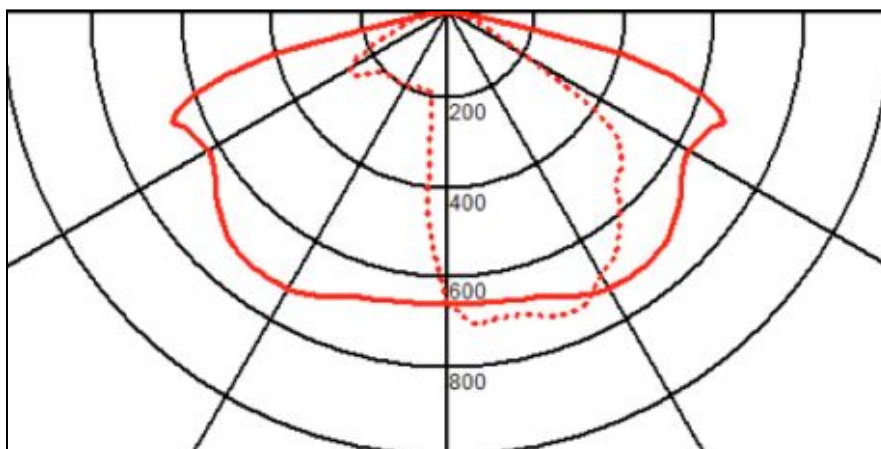
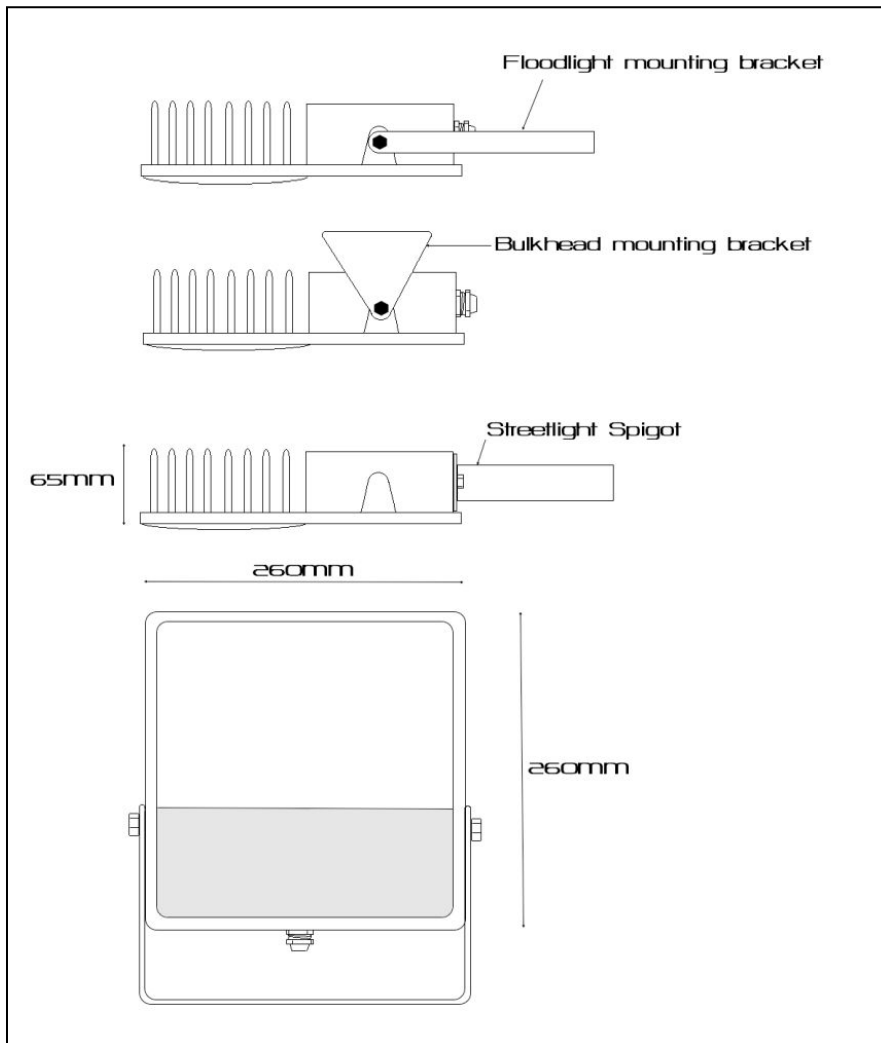


FACT FILE:

<u>General Information</u>	
Body Construction	Talc filled polyprop - Yoke and Bulkhead bracket Stainless Steel 316.
Lens Type	3mm Polycarbonate (UV stabilised) Impact modified Acrylic on request 4mm toughened glass
Lens options – Via Ledil lenses	Wide beam symmetrical – for general purpose floodlighting Ultra wide batwing – with either some forward or backward throw. Narrow beam 24 degree – for accent lighting
Recommended Height Installation	From 3m to 6m
Compliance	SANS 60598
IP Rating	IP 65
Control Type	Standard - no control, on or off DMX control available DALI control available
<u>Electrical Information</u>	
Electrical Class	Class 1
Socket Options	Nema modification available
Supply Voltage	230V AC 50HZ
Surge Protection	10KV standard – 20KV on request.
Power Factor	Better than 0,95
<u>Optical Information</u>	
CRI	minimum 80
CCT	5000K or 4000K or 3000K (2700K and 6500K possible on request) RGBW on Request
<u>Performance</u>	
Total Circuit load and Lumens	20W – 3500 lumens on PCB 43W – 7500 Lumens on PCB
<u>Operating Conditions</u>	
Operating Temperature range	-20°C to +45°C
<u>Dimensions and Mounting</u>	
Weight	3kg
Installation Data	IES files - Yes



FACT FILE:



Lumen values are as measured at source - on the PCB - not exiting light fitting. Due to the fast pace of development - values are subject to change at any time and without notice.