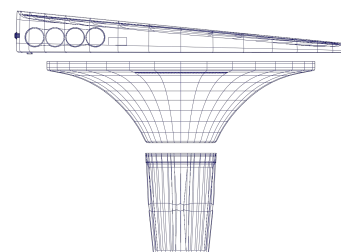
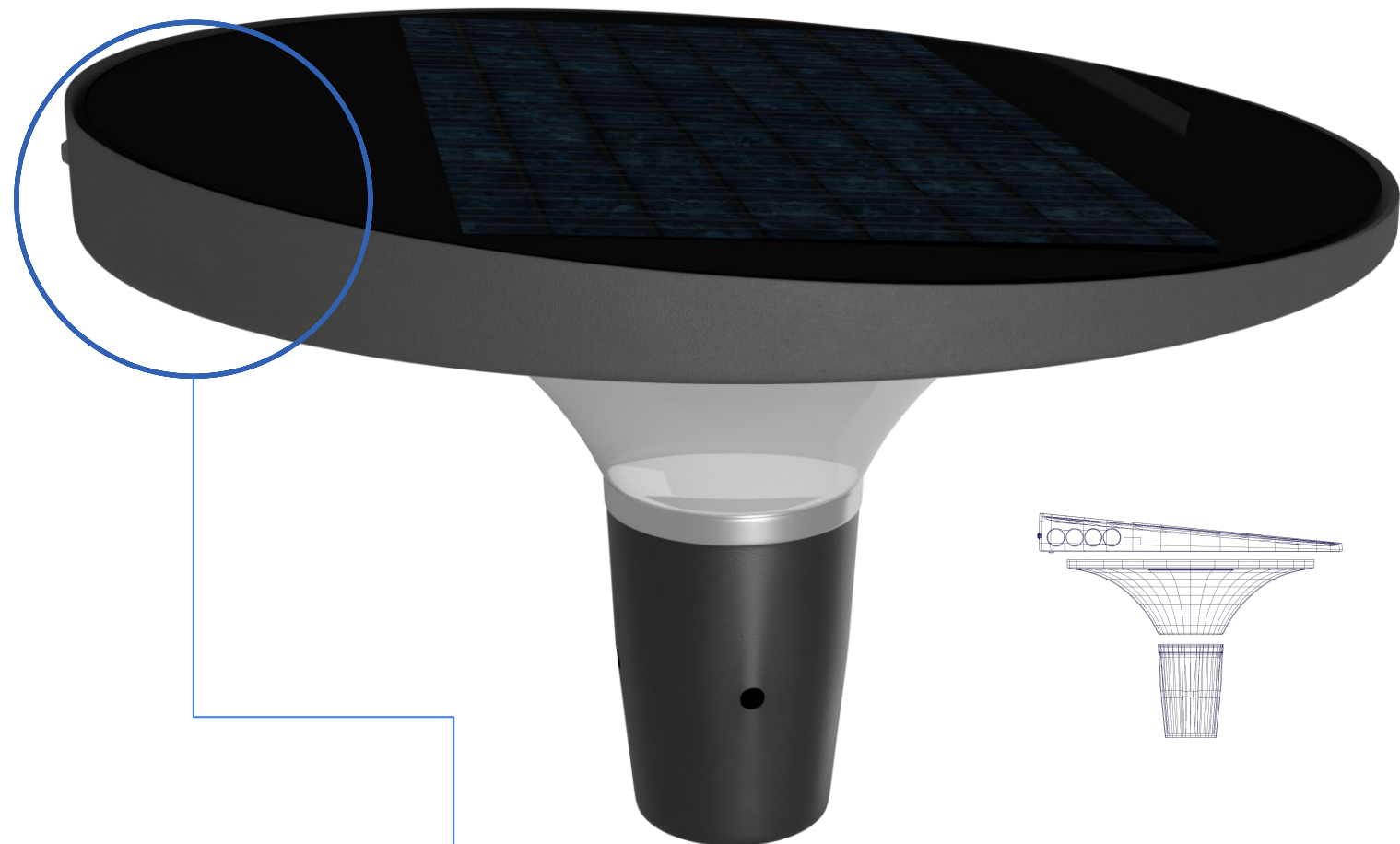
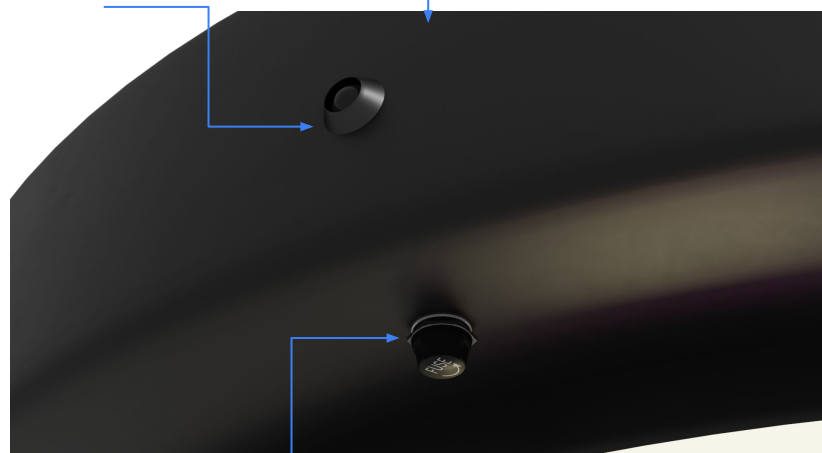


Suncatcher – Solar Post top



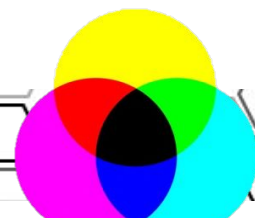
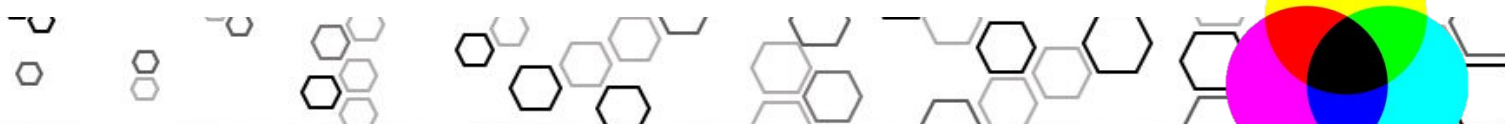
Day/night photocell

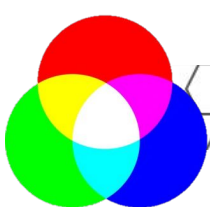


Fuse

8 degree angle – Self cleaning

Better energy absorption – (aim toward sunlight.)
Uncomfortable for birds to perch on.



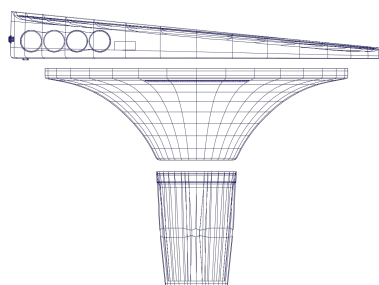
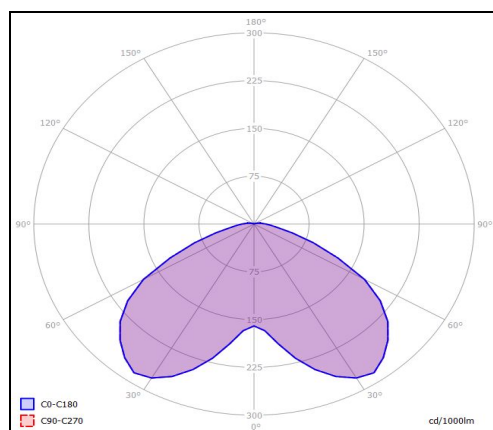


FACT FILE:

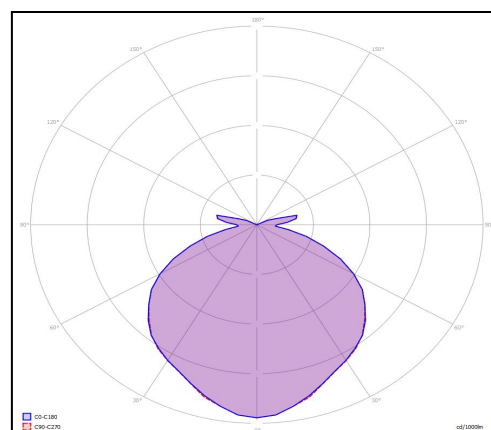


<u>Solar panel information</u>	
Specifications	Mono-crystalline - 595mm diameter – 35W 14V
Rated life and performance of Solar panel	20 years and 80%
Weathering resistance	Tempered glass – light to moderate hail resistant.
<u>Battery information</u>	
Type	Lithium Iron Phosphate (LiFePO4)
Capacity	13,2V 160W/hour
Control Type	Protection against over and under charging – activated by micro day/night switch
Number of cycles	3000 – translates to 8 years if activated once every 24 hours. (Then battery pack would need to be replaced.)
<u>Luminaire specifications</u>	
Lid – housing the solar panel	Either marine grade aluminium or stainless steel 312. (Polypropylene to follow)
Main lens	Macrolon grade polycarbonate – UV stable for 10 years minimum in direct sunlight
Gallery or base	Glass filled nylon – to fit over 76mm to 80mm diameter pole (pole not included)
IP rating	IP 65
<u>LEDs specifications</u>	
LED type	2835 high efficacy LEDs (over 170 lumens per W)
LED CCT	2700K or 3000K or 4000K or 5000K – RGB possible too.
LED CRI	Typical 84 – up to 95 on request
Initial lumens – on PCB within light (16W)	1800 lumens – decreasing over the course of a 12 hour night to 1300 lumens – provided the Sun Catcher had a good charge during the day.
<u>Dimensions and Mounting</u>	
Weight	12kg
Special pole requirements	No – a normal pole with a 76mm neck is sufficient – please consult us for pole designs – dependant on height.
Recommended mounting height	4 - 8m
Operating temperatures range	-20 to + 45 degrees C

Sun catcher – opal lens – polar curve

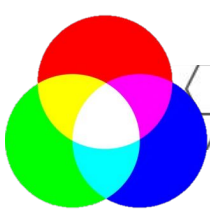


Sun catcher – clear lens – polar curve



Please note that we reserve the right to change information or specifications due to product advancement and development – without notice. Always check on our website for the most up to date information

Giantlight (PTY) LTD, Tel: +27 11 704 1450 / +27 82 451 5506, 169 Bush Telegraph road. Northlands Business Park, North Riding, Gauteng, South Africa, www.giantlight.co.za, email>otto@giantlight.co.za ; Wolfgang@giantlight.co.za



Micro day/night switch

33W Solar panel

Charge controller for battery

160 Watt hour Life04 (Lithium Iron phosphate cells)

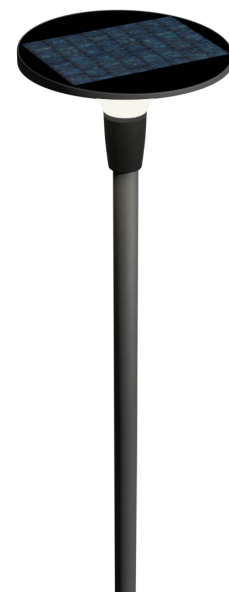
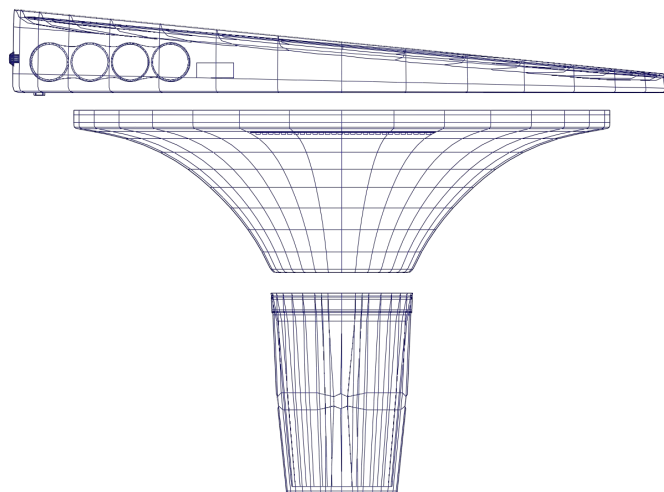
LED array

Macrolon polycarbonate lens

3 x M6 grub screws

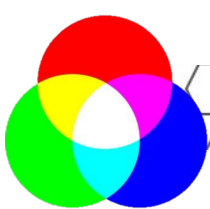
Glass filled Nylon base (gallery)
to fit over poles 76mm – 80mm
diameter.

Fuse



Please note that we reserve the right to change information or specifications due to product advancement and development – without notice.
Always check on our website for the most up to date information

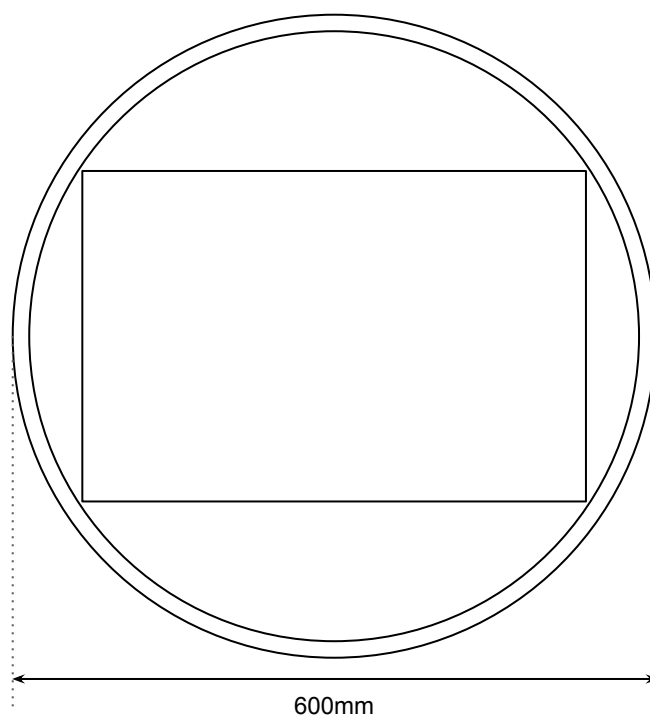
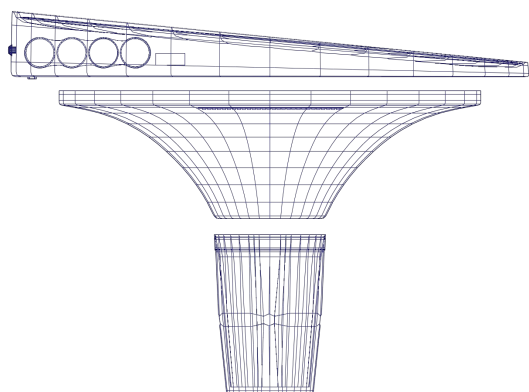
Giantlight (PTY) LTD, Tel: +27 11 704 1450 / +27 82 451 5506, 169 Bush Telegraph road. Northlands Business Park, North Riding, Gauteng, South Africa, www.giantlight.co.za, email>otto@giantlight.co.za ; Wolfgang@giantlight.co.za



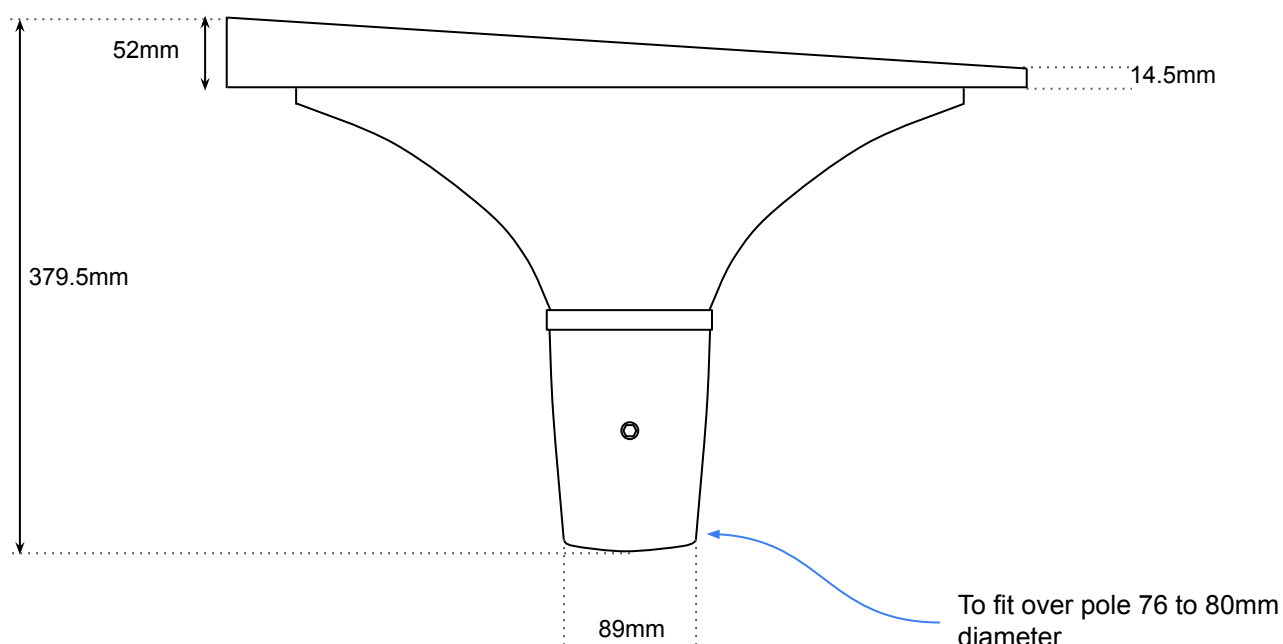
FACT FILE:



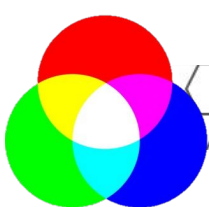
Top View:



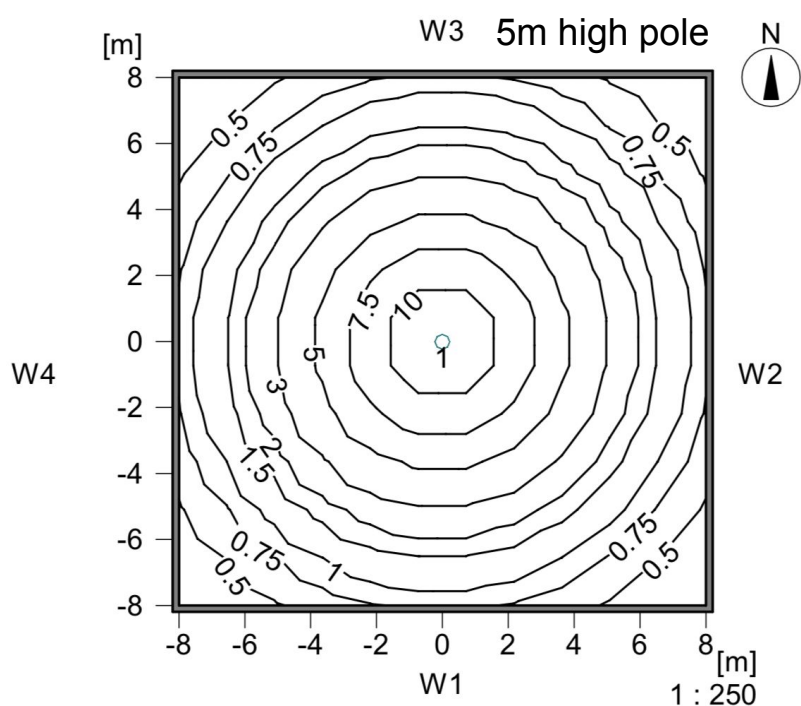
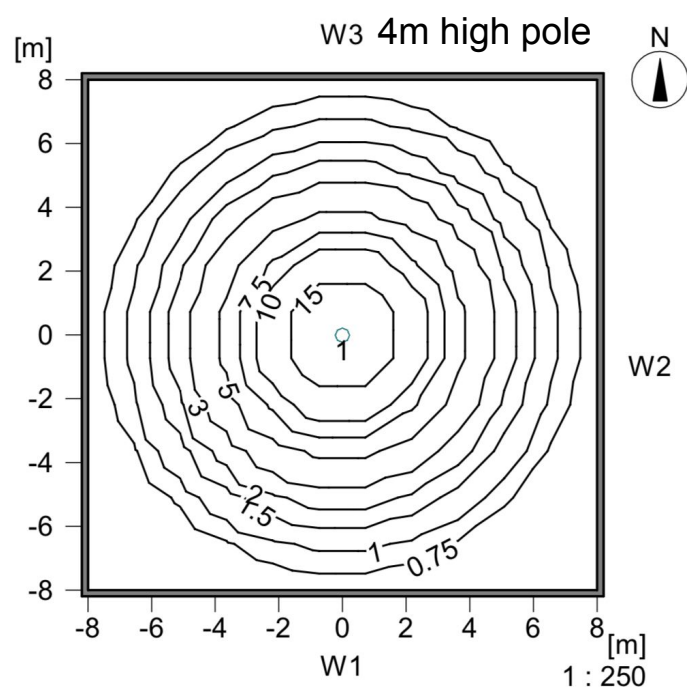
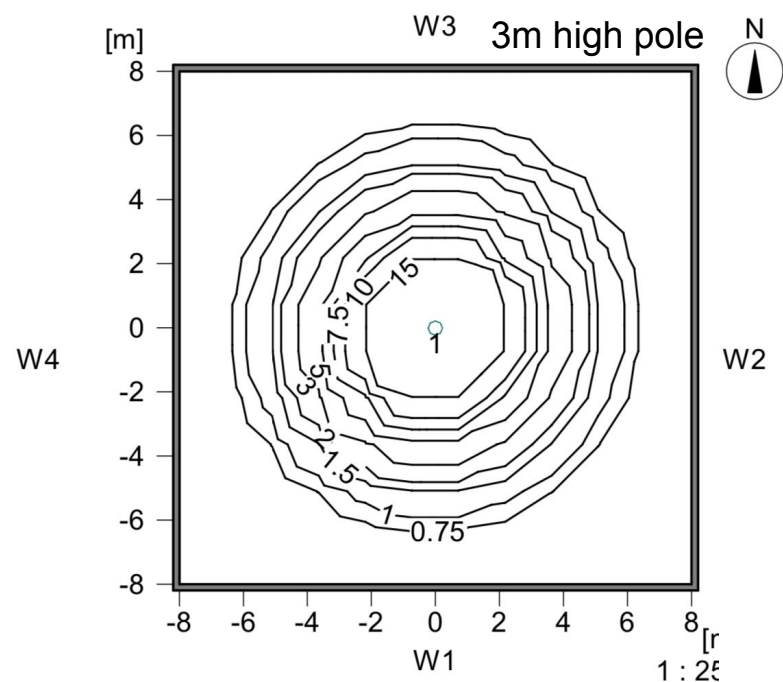
Side View:

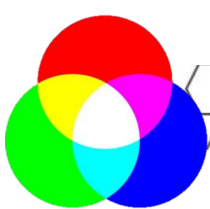


Please note that we reserve the right to change information or specifications due to product advancement and development – without notice.
Always check on our website for the most up to date information

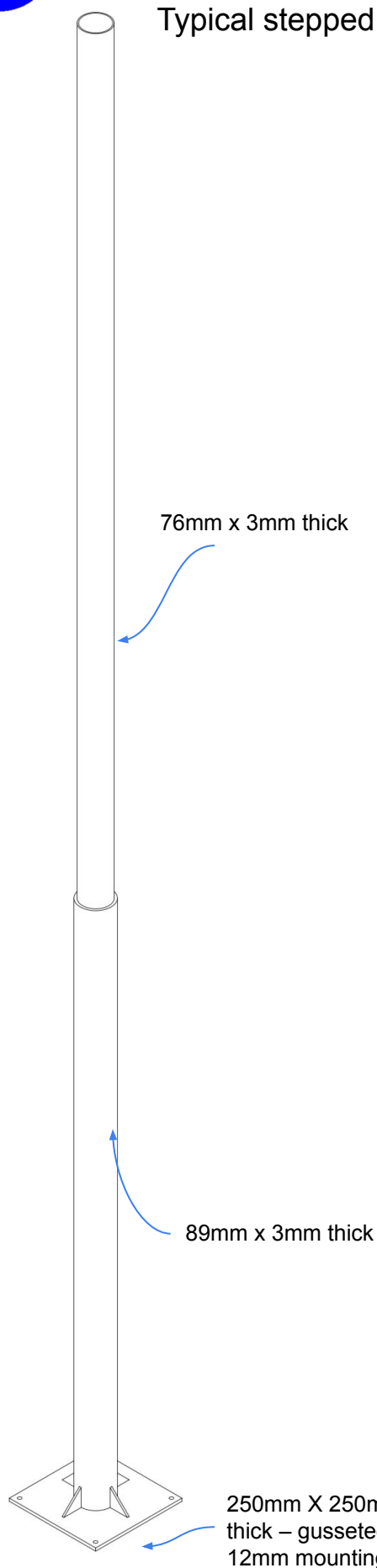


Isoline diagrams at initial full power – these levels will decrease during the evening

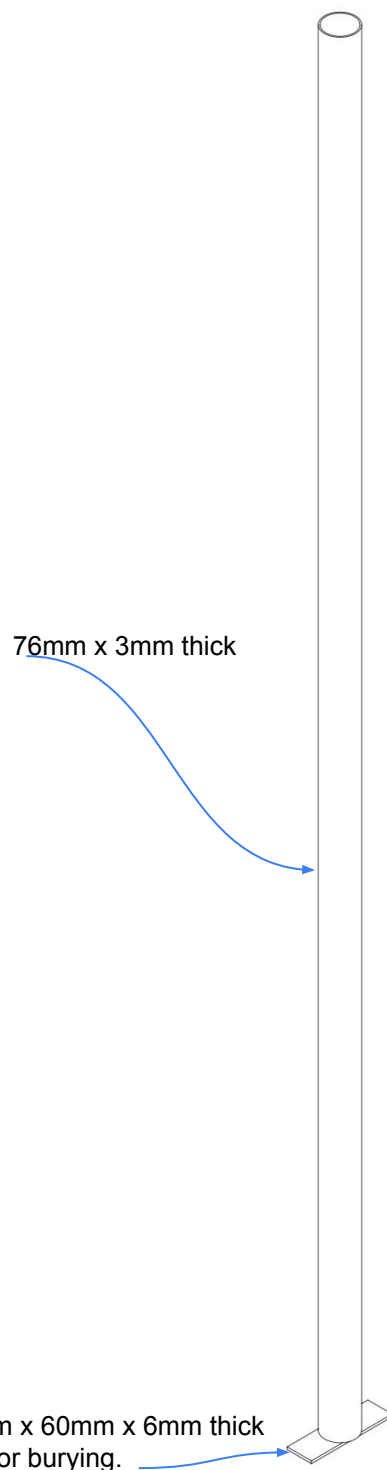




Typical stepped pole – 4m and up



Typical straight pole – 3m maximum



Mild steel Hot dip
galvanised standard